

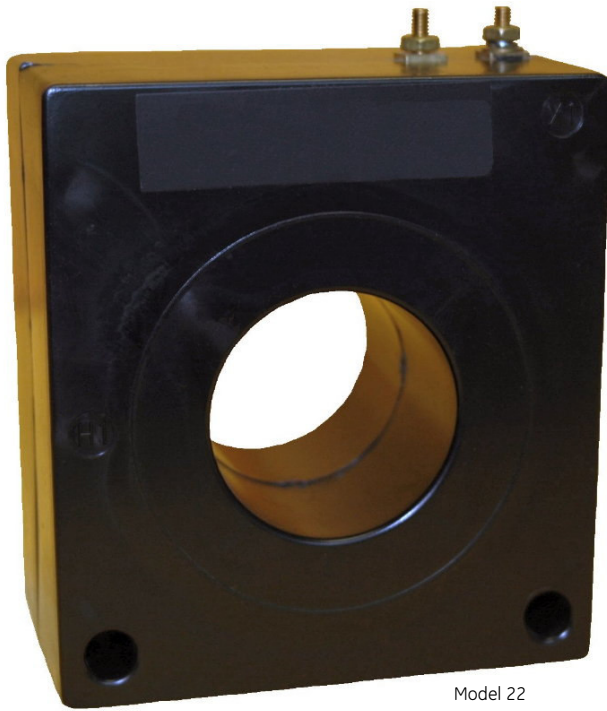


E93779



LR89403

Manufactured to meet the requirements of ANSI/IEEE C57.13.
Classified by U.L. in accordance with IEC 44-1



Model 22

APPLICATION:

Relaying and metering.

FREQUENCY:

50-400 Hz.

INSULATION LEVEL:

600 Volts, 10 kV BIL full wave.

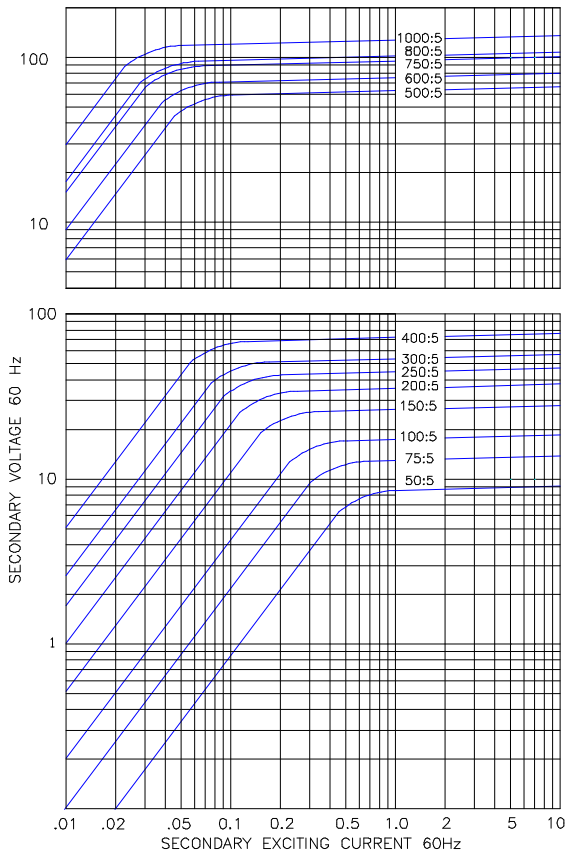
Terminals are brass studs No. 8-32 with one flatwasher, lockwasher and regular nut.

Order mounting bracket kit 0221B00541 separately.

Multi-ratios available upon request.

2

EXCITATION CURVE



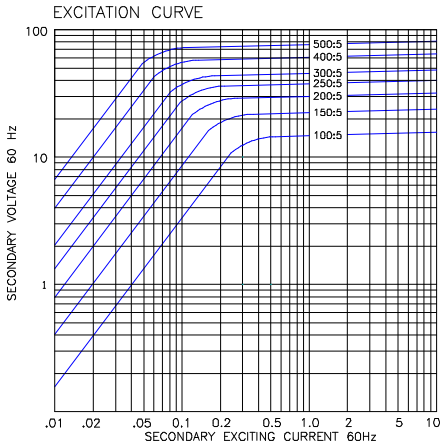
Model 21 Window Diameter 1.25"

Approximate weight 10 lbs.

CATALOG NUMBER	CURRENT RATIO	RELAY CLASS	ANSI METERING CLASS AT 60HZ					SECONDARY WINDING RESISTANCE (OHMS @ 75°C)	CONTINUOUS THERMAL RATING FACTOR	
			BO.1	BO.2	BO.5	BO.9	B1.8		@ 30°C	@ 55°C
21-500	50:5	—	1.2	2.4	—	—	—	0.026	2.0	2.0
21-750	75:5	C10	0.6	1.2	2.4	4.8	—	0.042	2.0	2.0
21-101	100:5	C10	0.6	1.2	1.2	2.4	4.8	0.063	2.0	2.0
21-151	150:5	C20	0.3	0.6	0.6	1.2	2.4	0.098	2.0	1.5
21-201	200:5	C20	0.3	0.3	0.6	0.6	1.2	0.126	2.0	1.5
21-251	250:5	C20	0.3	0.3	0.3	0.6	1.2	0.158	1.5	1.5
21-301	300:5	C20	0.3	0.3	0.3	0.3	0.6	0.168	1.5	1.33
21-401	400:5	C50	0.3	0.3	0.3	0.3	0.6	0.253	1.5	1.0
21-501	500:5	C20	0.3	0.3	0.3	0.3	0.6	0.283	1.5	1.0
21-601	600:5	C50	0.3	0.3	0.3	0.3	0.3	0.339	1.33	1.0
21-751	750:5	C50	0.3	0.3	0.3	0.3	0.3	0.424	1.0	0.8
21-801	800:5	C50	0.3	0.3	0.3	0.3	0.3	0.452	1.0	0.8
21-102	1000:5	C100	0.3	0.3	0.3	0.3	0.3	0.565	1.0	0.8

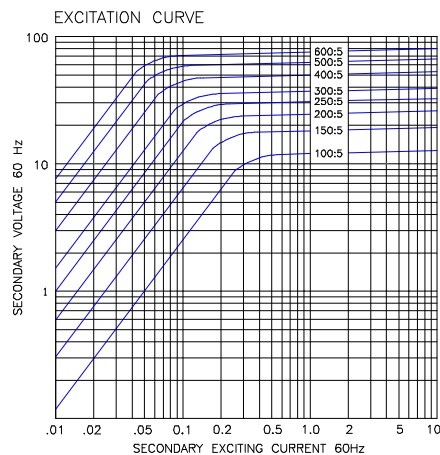
Models 21, 22, 23, 24, 25

2



Model 22 Window Diameter 1.63"
Approximate weight 9 lbs.

CATALOG NUMBER	CURRENT RATIO	RELAY CLASS	ANSI METERING CLASS AT 60HZ					SECONDARY WINDING RESISTANCE (OHMS @ 75°C)	CONTINUOUS THERMAL RATING FACTOR	
			BO.1	BO.2	BO.5	BO.9	B1.8		@ 30°C	@ 55°C
22-101	100:5	C10	0.6	1.2	2.4	2.4	4.8	0.060	2.0	2.0
22-151	150:5	C10	0.3	0.6	1.2	1.2	2.4	0.090	2.0	2.0
22-201	200:5	C20	0.3	0.3	0.6	1.2	1.2	0.120	2.0	1.5
22-251	250:5	C20	0.3	0.3	0.6	0.6	1.2	0.150	1.5	1.5
22-301	300:5	C20	0.3	0.3	0.3	0.6	0.6	0.180	1.5	1.33
22-401	400:5	C20	0.3	0.3	0.3	0.3	0.6	0.241	1.5	1.0
22-501	500:5	C50	0.3	0.3	0.3	0.3	0.3	0.301	1.5	1.0



Model 23 Window Diameter 2.00"
Approximate weight 8.5 lbs.

CATALOG NUMBER	CURRENT RATIO	RELAY CLASS	ANSI METERING CLASS AT 60HZ					SECONDARY WINDING RESISTANCE (OHMS @ 75°C)	CONTINUOUS THERMAL RATING FACTOR	
			BO.1	BO.2	BO.5	BO.9	B1.8		@ 30°C	@ 55°C
23-101	100:5	-	0.6	0.6	2.4	4.8	-	0.051	2.0	2.0
23-151	150:5	C10	0.6	0.6	0.6	1.2	2.4	0.076	2.0	2.0
23-201	200:5	C10	0.3	0.6	0.6	1.2	2.4	0.114	2.0	1.5
23-251	250:5	C20	0.3	0.3	0.6	0.6	1.2	0.143	2.0	1.5
23-301	300:5	C20	0.3	0.3	0.3	0.6	1.2	0.171	1.5	1.33
23-401	400:5	C20	0.3	0.3	0.3	0.3	0.6	0.226	1.5	1.0
23-501	500:5	C50	0.3	0.3	0.3	0.3	0.3	0.286	1.5	1.0
23-601	600:5	C50	0.3	0.3	0.3	0.3	0.3	0.343	1.33	1.0

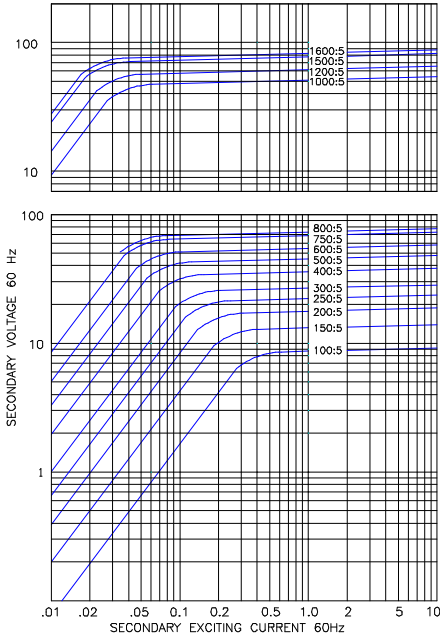
USA, Canada, Asia, Latin America
Tel: +1-800-547-8629
Fax: +1-905-201-2455
e-mail: sales.multilin@ge.com

Europe, Middle East, Africa
Tel: +34-94-485-88-00
Fax: +34-94-485-88-45
e-mail: gmultilin.euro@ge.com

Models 21, 22, 23, 24, 25

2

EXCITATION CURVE

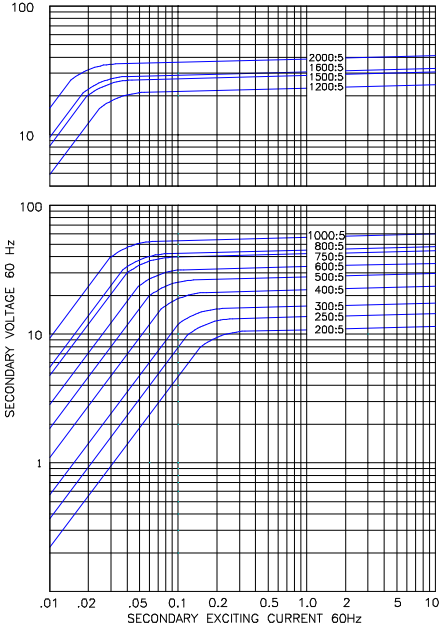


Model 24 Window Diameter 2.50"

Approximate weight 6.5 lbs.

CATALOG NUMBER	CURRENT RATIO	RELAY CLASS	ANSI METERING CLASS AT 60HZ					SECONDARY WINDING RESISTANCE (OHMS @ 75°C)	CONTINUOUS THERMAL RATING FACTOR	
			BO.1	BO.2	BO.5	BO.9	B1.8		@ 30°C	@ 55°C
24-101	100:5	—	0.6	1.2	2.4	4.8	—	0.046	2.0	2.0
24-151	150:5	—	0.6	0.6	1.2	2.4	4.8	0.069	2.0	2.0
24-201	200:5	C10	0.3	0.3	0.6	1.2	2.4	0.096	2.0	1.5
24-251	250:5	C10	0.3	0.3	0.3	0.6	1.2	0.118	2.0	1.5
24-301	300:5	C10	0.3	0.3	0.3	0.6	1.2	0.133	2.0	1.5
24-401	400:5	C20	0.3	0.3	0.3	0.6	0.6	0.212	1.5	1.0
24-501	500:5	C20	0.3	0.3	0.3	0.3	0.6	0.265	1.5	1.0
24-601	600:5	C20	0.3	0.3	0.3	0.3	0.3	0.317	1.33	1.0
24-751	750:5	C20	0.3	0.3	0.3	0.3	0.3	0.396	1.0	1.0
24-801	800:5	C20	0.3	0.3	0.3	0.3	0.3	0.423	1.0	0.8
24-102	1000:5	C10	0.3	0.3	0.3	0.3	0.3	0.446	1.0	0.8
24-122	1200:5	C10	0.3	0.3	0.3	0.3	0.3	0.536	1.0	0.8
24-152	1500:5	C10	0.3	0.3	0.3	0.3	0.3	0.699	1.0	0.6
24-162	1600:5	C10	0.3	0.3	0.3	0.3	0.3	0.713	0.8	0.6

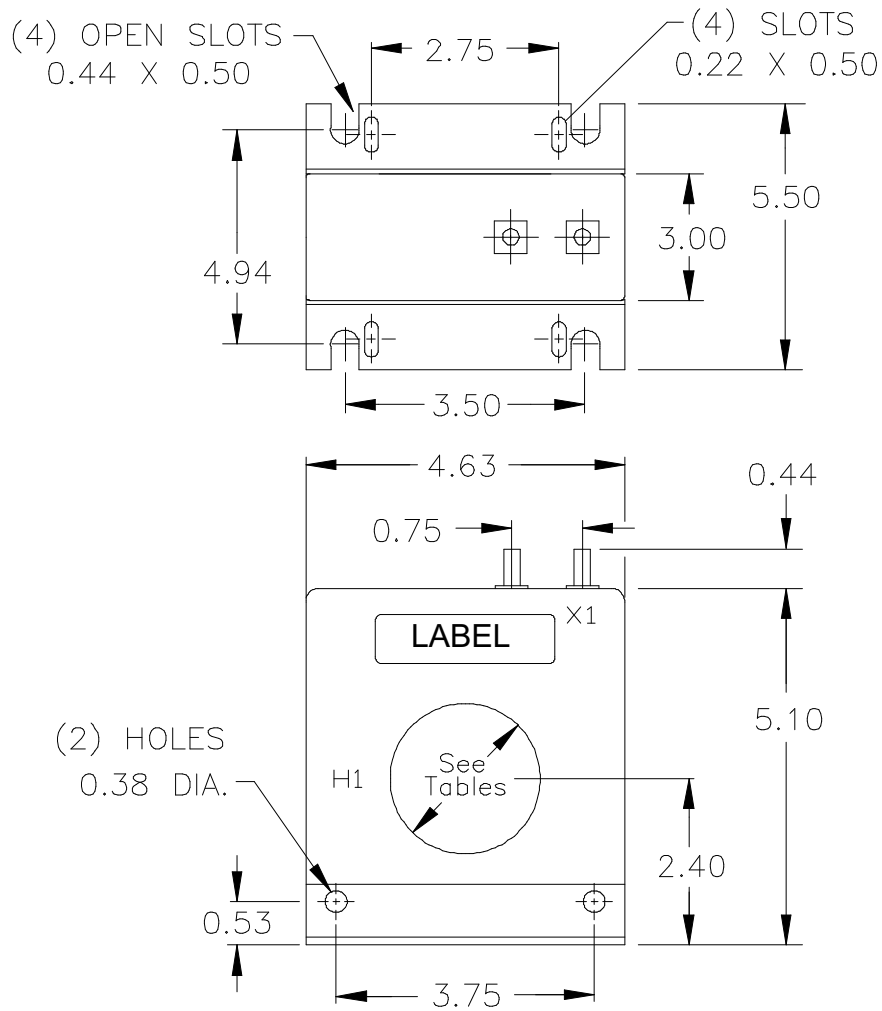
EXCITATION CURVE



Model 25 Window Diameter 3.13"

Approximate weight 5.5 lbs.

CATALOG NUMBER	CURRENT RATIO	V.A. ± 1% CLASS	ANSI METERING CLASS AT 60HZ					SECONDARY WINDING RESISTANCE (OHMS @ 75°C)	CONTINUOUS THERMAL RATING FACTOR	
			BO.1	BO.2	BO.5	BO.9	B1.8		@ 30°C	@ 55°C
25-201	200:5	10	0.6	0.6	1.2	2.4	4.8	0.081	2.0	2.0
25-251	250:5	15	0.3	0.3	1.2	1.2	2.4	0.108	2.0	1.5
25-301	300:5	20	0.3	0.3	0.6	1.2	2.4	0.129	2.0	1.5
25-401	400:5	30	0.3	0.3	0.6	0.6	1.2	0.194	1.5	1.33
25-501	500:5	45	0.3	0.3	0.3	0.6	1.2	0.243	1.5	1.0
25-601	600:5	60	0.3	0.3	0.3	0.3	0.6	0.292	1.33	1.0
25-751	750:5	75	0.3	0.3	0.3	0.3	0.6	0.364	1.0	0.8
25-801	800:5	80	0.3	0.3	0.3	0.3	0.3	0.389	1.0	0.8
25-102	1000:5	100	0.3	0.3	0.3	0.3	0.3	0.486	1.0	0.8
25-122	1200:5	75	0.3	0.3	0.3	0.3	0.3	0.389	1.0	0.8
25-152	1500:5	90	0.3	0.3	0.3	0.3	0.3	0.617	1.0	0.8
25-162	1600:5	95	0.3	0.3	0.3	0.3	0.3	0.658	1.0	0.6
25-202	2000:5	100	0.3	0.3	0.3	0.3	0.3	0.822	0.8	0.6



Outline - Models 21, 22, 23, 24, 25

USA, Canada, Asia, Latin America

Tel: +1-800-547-8629

Fax: +1-905-201-2455

e-mail: sales.multilin@ge.com

Europe, Middle East, Africa

Tel: +34-94-485-88-00

Fax: +34-94-485-88-45

e-mail: gemultilin.euro@ge.com